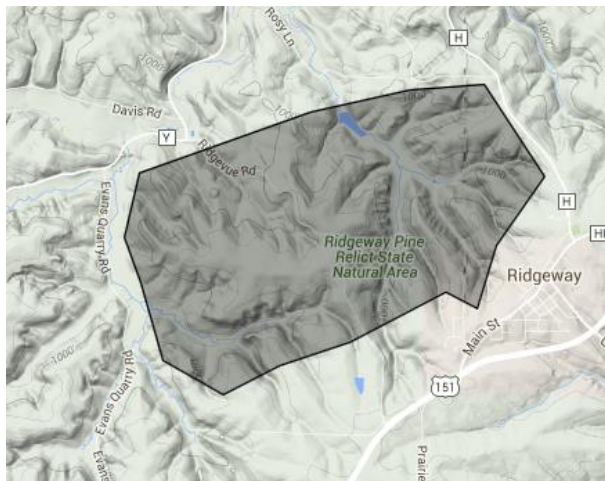


Important sites to consider for conservation are:

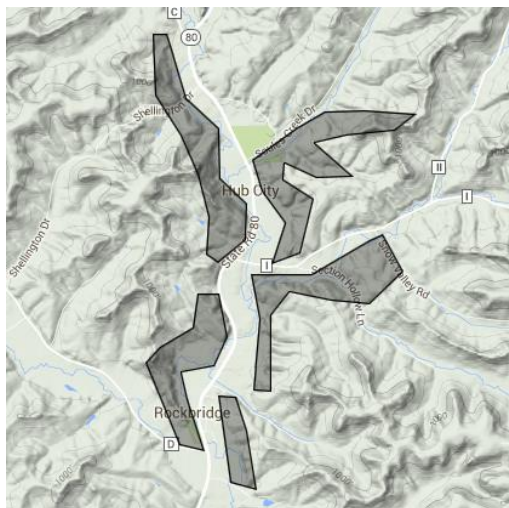
Ridgeway Pine Relict: Ridgeway Pine Relict features a spectacular site with eight separate pine relicts set among soaring sandstone cliffs, numerous rock outcrops, shallow caves and rockshelters. Pine relicts are southern Wisconsin pine forests that have persisted since the last glacier receded some 12,000 years ago when a cooler climate was favorable for the growth of pine forests. As the climate warmed prairie and oak woodlands replaced the pine and today, remnant pine forests remain only on steep slopes and rocky cliffs in the Driftless Area. These rocky outcrops protected the pine remnants from fire and allowed the pines to reach old-growth status.



- Wisconsin Responsibility – Moderate
- Irreplaceable Features – Moderate
- Diversity of Natural Features – Moderate
- Rare Species – Several
- Species of Conservation Concern – Moderate
- Vulnerability to a Warming Climate – Mod High
- Conservation Status – Some

The site has medium-term conservation opportunities.

Pine River Relicts (Hub City SNA): Near Hub City and Rockbridge are 75 foot sandstone cliffs. These cliffs support northern forests of hemlock, white pine, and yellow birch with a ground cover of Labrador-tea, trailing arbutus, bunchberry, wintergreen, and Sullivan's cool-wort. The protected area is only a small portion of the natural feature.

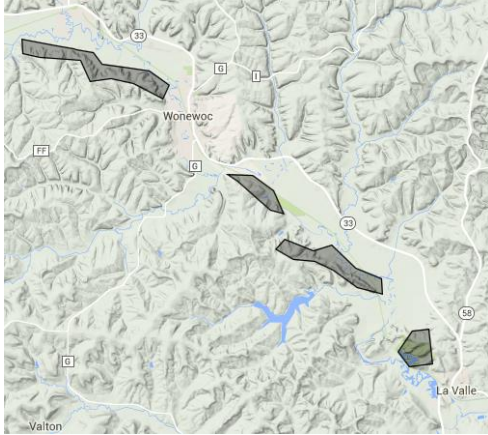


- Wisconsin Responsibility – Moderate
- Irreplaceable Features – Moderate
- Diversity of Natural Features – Moderate
- Rare Species – Several
- Species of Conservation Concern – Moderate
- Vulnerability to a Warming Climate – Mod High
- Conservation Status – Some

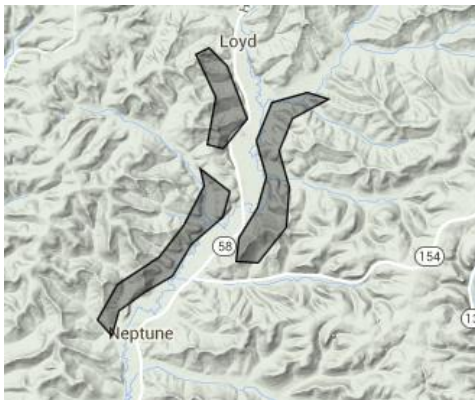
The site has medium-term conservation opportunities.

Small Cliff Conifer Relict Tracts that may have Limited Conservation Opportunities:

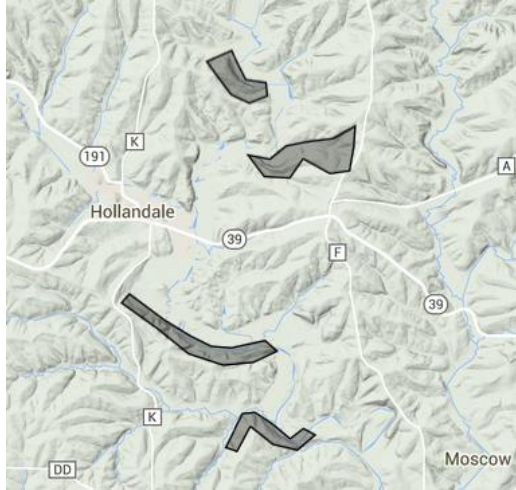
Baraboo River Cliffs, Sauk and Juneau counties: Featured are a series of sandstone cliffs from LaValle to north of Wonewoc. These cliffs have quality hemlock and red pine relicts.



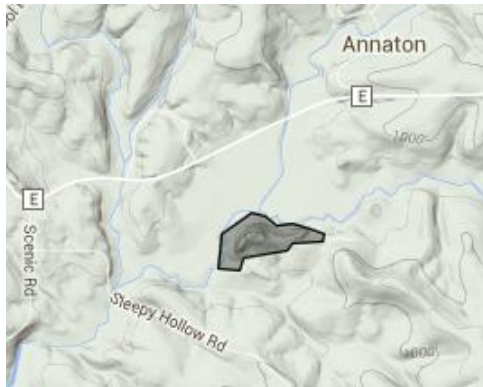
Willow River Pine Relicts, Richland County: Featured are a series of sandstone cliffs on both side of the willow River north of Neptune. These cliffs have quality white and red pine relicts.



Hollandale Relicts, Iowa County: Featured are a series of sandstone cliffs east of Hollandale. These cliffs have quality hemlock and red pine relicts.



Annaton Pine Relict, Grant County: Featured is a sandstone knob southwest of Annaton. This knob harbors a quality white pine relict.



Eau Galle Cliffs, Pierce County: Featured is a north-facing dolomite cliff just west of Spring Valley. This knob harbors a quality conifer relict that also has white spruce unlike any other conifer relict in the state.



Wilton Hemlocks, Monroe County: Featured are a series of sandstone cliffs south of Wilton. These cliffs have quality hemlock and red pine relicts.

