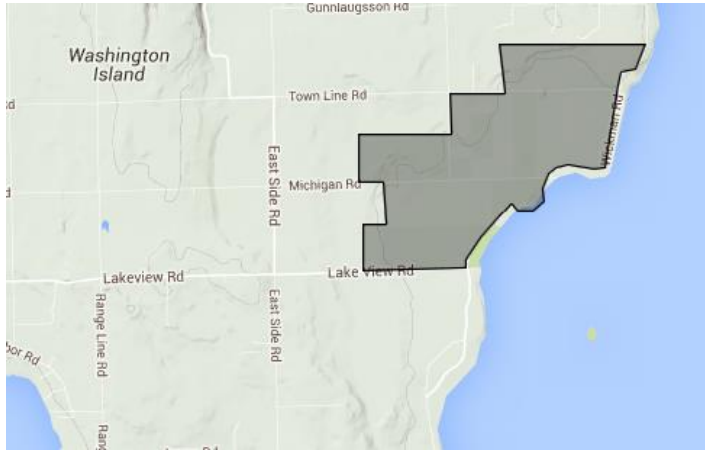
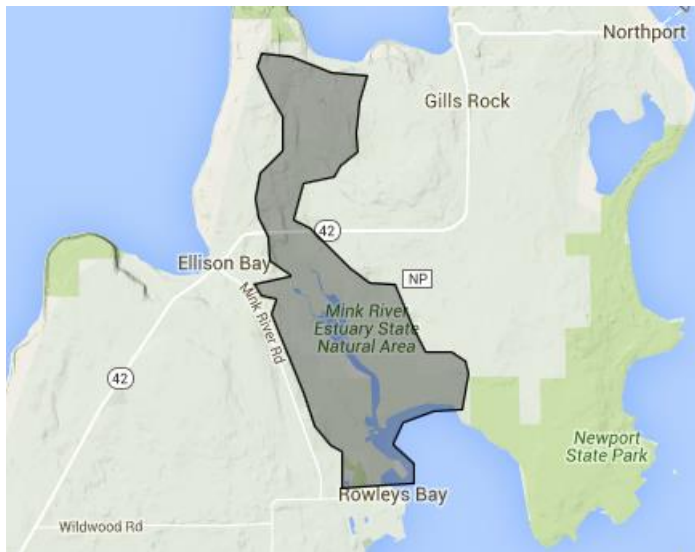


Big and Little Marsh, Door County: Big and Little Marsh features a complex of boreal rich fen, northern wet-mesic forest, and a large emergent aquatic marsh on marl. Located on Washington Island, off the tip of the Door County peninsula, the site harbors numerous rare species.



- Wisconsin Responsibility – Moderate
 - Irreplaceable Features – Moderately High
 - Diversity of Natural Features – Moderate
 - Rare Species – Moderate
 - Species of Conservation Concern – Moderate
 - Vulnerability to a Warming Climate – High
 - Conservation Status –Half
- This site has narrow conservation opportunities.

Mink River Estuary, Door County: The Mink River Estuary is one of the most pristine freshwater estuaries in the country. The river originates in alkaline, spring-fed wetlands in the central Door Peninsula and ends just a few miles downstream where it empties into Lake Michigan at Rowley's Bay.



- Wisconsin Responsibility – Mod High
 - Irreplaceable Features – Moderately High
 - Diversity of Natural Features – Moderate
 - Rare Species – High
 - Species of Conservation Concern – High
 - Vulnerability to a Warming Climate – High
 - Conservation Status –Half
- This site has narrow conservation opportunities.

North Bay, Door County: North Bay features one of the last remaining undeveloped stretches of Lake Michigan shore on the Door Peninsula. With nearly one mile of uninterrupted lakeshore, this site offers a range of plant communities that change through time in response to the periodic rise and fall of lake water levels.



- Wisconsin Responsibility – Mod High
 - Irreplaceable Features – Moderate
 - Diversity of Natural Features – Moderate
 - Rare Species – Mod High
 - Species of Conservation Concern – Mod High
 - Vulnerability to a Warming Climate – High
 - Conservation Status – Half
- This site has narrow conservation opportunities.

Kangaroo Lake, Door County: Kangaroo Lake lies in a basin ½ mile from the Lake Michigan coast and contains a mosaic of communities including a shallow, marl-bottom lake, northern upland forest, northern wet-mesic forest and marsh.



- Wisconsin Responsibility – Mod High
 - Irreplaceable Features – Moderate
 - Diversity of Natural Features – Moderate
 - Rare Species – Moderate
 - Species of Conservation Concern – Moderate
 - Vulnerability to a Warming Climate – High
 - Conservation Status – Half
- This site has narrow conservation opportunities.

One estuarine property has seen intensive past protection efforts small acres of additional work is need to complete acquisition for this property:

- Mud Lake, Door County.

Dunes and Beach: Lake Michigan's dune and beach complexes support plants and animals endemic to the Great Lakes coastal habitats.

Most of the dune communities have seen intensive past protection efforts small acres of additional work is need to complete acquisition for these properties:

- Kenosha Dunes, Kenosha County.
- Harrington Beach State Park, Ozaukee County.
- Kohler Dunes, Sheboygan County – the northern portion is under threat.
- Whitefish Dunes, Door County.
- Seagull Bar, Marinette County.

Green Bay West Shore Marshes: The extensive marshes along the west shore of Green Bay provide critical habitat for fish and birds. Most the marshes have some level of protection and lie within the West Shores Wildlife Area.

Important protected areas are:

- Little and Long Tail Points in Brown County
- Oconto Marshes in Oconto County.
- Peshtigo Harbor Marshes and Forest in Marinette County.
- An unusual Oak Woodland is found in the Pensaukee Unit.