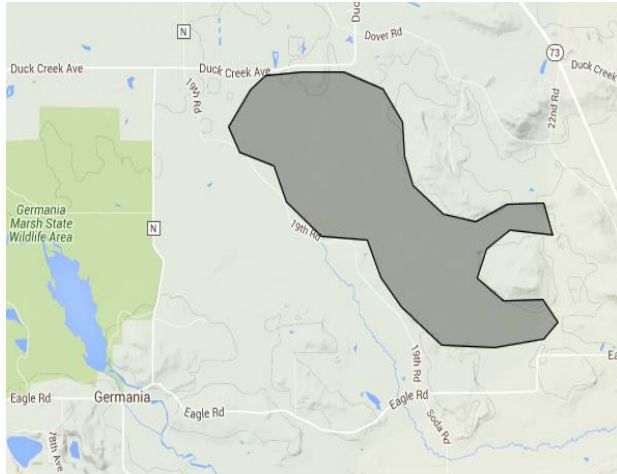


Peatlands Projects:

Swader Tamaracks, Marquette County: Lying within a 1000-acre natural basin in the glaciated Central Plain, Swader Tamaracks features a large, southern tamarack fen with a high diversity of unusual plants and northern birds. The undisturbed tamarack fen is permanently wet and relatively free of water fluctuations.

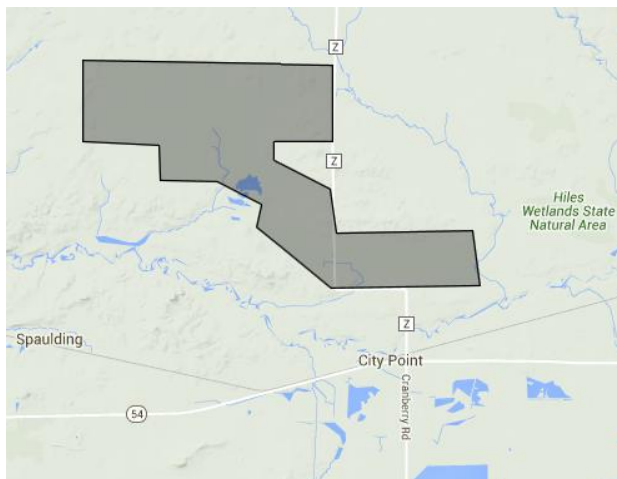


- Wisconsin Responsibility – Moderate
- Irreplaceable Features – Moderate
- Diversity of Natural Features – Moderate
- Rare Species – Some
- Species of Conservation Concern – Some
- Vulnerability to a Warming Climate – High
- Conservation Status – Unknown

This site has medium-term conservation opportunities.

Mid-sized Peatlands Projects: The next sites have known quality sedge meadows and other types of peatlands. These sites are smaller in extent; however they lie in more developed parts of the state and provide the best opportunities for smaller projects to protect these important wetland features.

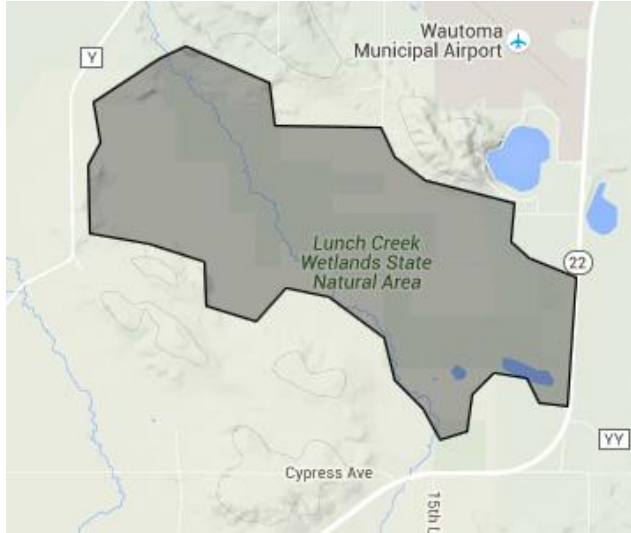
Amundson Peatlands, Jackson County: This site is the last block of central Wisconsin peatlands with minimal protection and recognition. Cranberry operations are rapidly encroaching on the peatland. A public private partnership may be the only means for some level of long-term protection of natural values.



- Wisconsin Responsibility – Moderate
- Irreplaceable Features – Moderate
- Diversity of Natural Features – Moderate
- Rare Species – Some
- Species of Conservation Concern – Some
- Vulnerability to a Warming Climate – High
- Conservation Status – Unknown

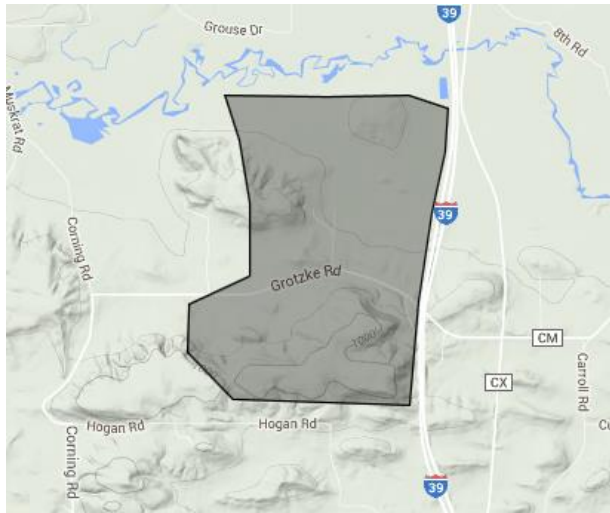
This site has medium-term conservation opportunities.

Lunch Creek SNA, Waushara County: Lunch Creek Wetlands contains one of the most diverse and species rich sedge meadows in Wisconsin situated within a mainly undisturbed watershed, an uncommon occurrence in Wisconsin. This large wetland complex is free of exotic species and dominated by fen and sedge meadow communities containing a total of 115 plant species.



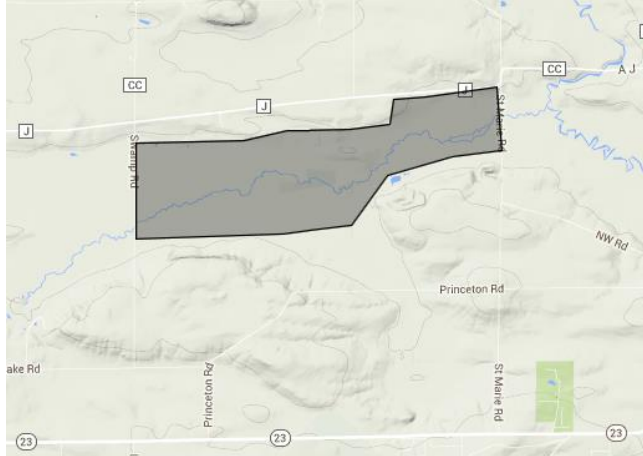
- Wisconsin Responsibility – Moderate
 - Irreplaceable Features – Moderate
 - Diversity of Natural Features – Moderate
 - Rare Species – Several
 - Species of Conservation Concern – Several
 - Vulnerability to a Warming Climate – Moderately High
 - Conservation Status – Half
- This site has medium-term conservation opportunities.

Neenah Creek Meadows, Columbia County: Neenah Creek Meadows contain diverse wetland communities and species rich sedge meadows and fens. Nearby uplands have numerous sandstone outcrops and oak barrens communities with several rare species.



- Wisconsin Responsibility – Moderate
 - Irreplaceable Features – Moderate
 - Diversity of Natural Features – Moderate
 - Rare Species – A Few
 - Species of Conservation Concern – A Few
 - Vulnerability to a Warming Climate – Moderately High
 - Conservation Status – Unknown
- This site has medium-term conservation opportunities.

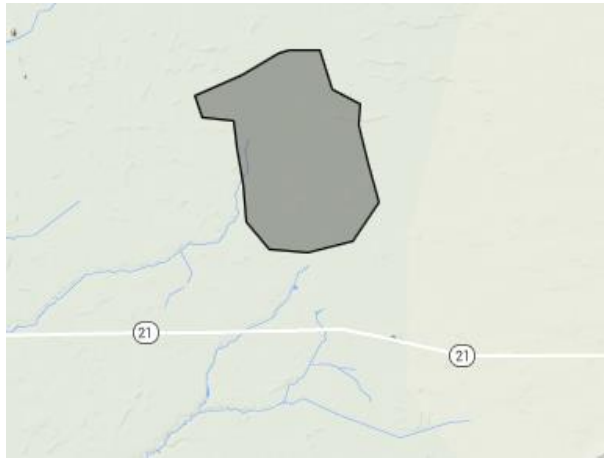
Snake Creek Fen, Green Lake County: Snake Creek Fen features a high-quality calcareous fen and associated springs located within a large wetland complex in the Snake Creek corridor. The fen is characterized by saturated soil and is dominated by prairie grasses and forbs along with several indicator fen species.



- Wisconsin Responsibility – Moderate
- Irreplaceable Features – Moderate
- Diversity of Natural Features – Moderate
- Rare Species – A Few
- Species of Conservation Concern – A Few
- Vulnerability to a Warming Climate – Moderate
- Conservation Status – Minute

This site has medium-term conservation opportunities.

Cottonville Wetlands, Adams County: High quality sedge meadow with little in the way of invasive species provides the rationale for this area.



- Wisconsin Responsibility – Moderate
- Irreplaceable Features – Moderate
- Diversity of Natural Features – Moderate
- Rare Species – A Few
- Species of Conservation Concern – A Few
- Vulnerability to a Warming Climate – Moderate
- Conservation Status – Unknown

This site has medium-term conservation opportunities.

Existing Protected Areas with Opportunities for Peatland Management:

These sites are almost entirely in public ownership with a few parcels left to complete protection. However, some areas are not fully managed for a broad range of wetland attributes.

- Jackson, Eau Claire, Clark, and Wood County Forests: Many thousands of acres of peatlands are recognized in these county forests.
- Necedah NWR & Meadow Valley Wildlife Area: Many thousands of acres of peatlands are recognized in these wildlife areas.
- Grand River Marsh Wildlife Area, Marquette and Green Lake Counties: Significant acres of wet prairie are managed in this wildlife area.
- Swan Lake Wildlife Area, Columbia County: Significant acres of wet prairie and sedge meadow are managed in this wildlife area.
- Washburn County Forest: Crystal bog and Lost Lake bog are recognized as HCVPs in the county forest plan.
- Crex Meadows, Fish Lake and Amsterdam Sloughs Wildlife Areas: these wildlife areas have the largest and best wiregrass meadow in the state.
- Dewey Marsh Wildlife Area, Portage County: The wildlife area harbors very high quality wetlands. Several acres of additional protection are needed.