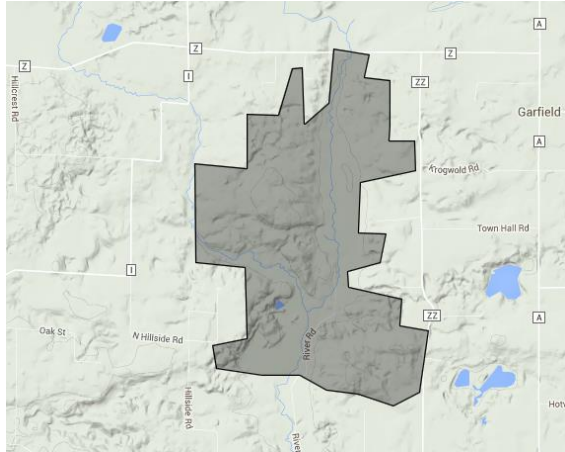


Xeric Pine-Oak Forests:

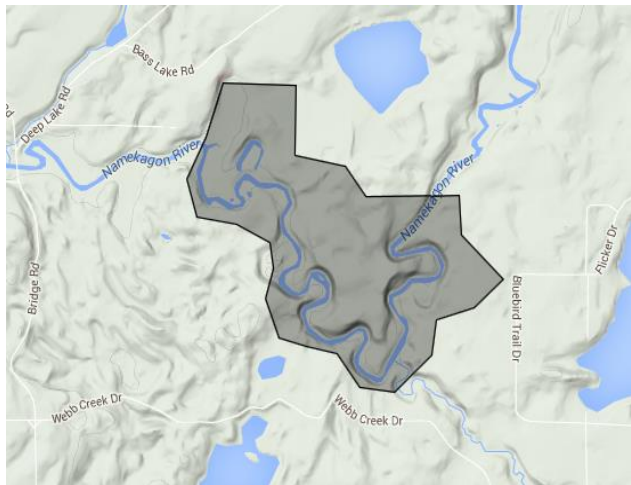
Tomorrow River Woods, Portage County: The vast majority of this natural feature lies within the Tomorrow River Fishery Area, but a significant portion is private. A red oak forest dominated by large diameter trees along with scattered white pine, eastern hemlock and yellow birch comprises the bulk of this important resource. A combination of northern and southern bird species of concern is the most important biological reason for maintenance of an intact older forest.



- Wisconsin Responsibility – Moderate
 - Irreplaceable Features – Moderate
 - Diversity of Natural Features – Moderate
 - Rare Species – Moderately High
 - Species of Conservation Concern – Moderately High
 - Vulnerability to a Warming Climate – Moderate
 - Conservation Status – Most
- This site has medium-term conservation opportunities.

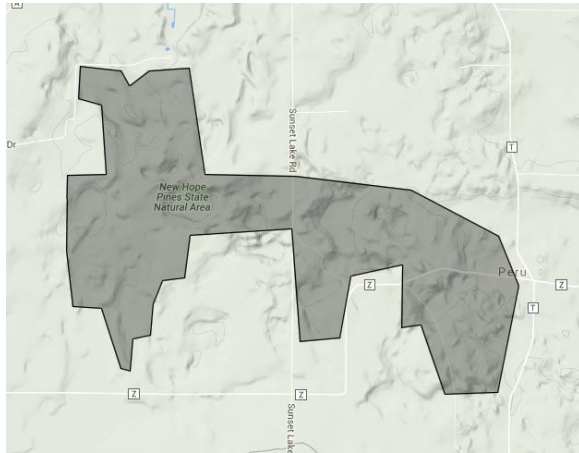
Midsized Pine-Oak Forest Projects: The next site has known quality red pine forest.

The *Solar Pines, Washburn County* has about ½ section of red pine that could be protected and managed for old pine forest characteristics.



- Wisconsin Responsibility – Moderate
 - Irreplaceable Features – Moderate
 - Diversity of Natural Features – Moderate
 - Rare Species – Moderately High
 - Species of Conservation Concern – Moderately High
 - Vulnerability to a Warming Climate – Moderate
 - Conservation Status – Most
- This site has medium-term conservation opportunities.

New Hope Pines, Portage County: New Hope Pines features one of the largest and least disturbed northern dry-mesic forests remaining in central Wisconsin and is reminiscent of the vast "pineries" found in this region prior to settlement.



- Wisconsin Responsibility – Moderate
- Irreplaceable Features – Moderate
- Diversity of Natural Features – Moderate
- Rare Species – Moderately High
- Species of Conservation Concern – Moderately High
- Vulnerability to a Warming Climate – Moderate
- Conservation Status – Most

This site has medium-term conservation opportunities.

Existing Protected Areas with Consideration of Management for Old Forest Characteristics:

These sites are almost entirely in public ownership with a few parcels left to complete protection. However, some areas are not fully recognized for their old forest values.

- Menominee River Recreation Area – The Pemene Falls area has many old natural origin pines plus bedrock features.
- Nicolet – Tar Dam and Sunrise Pines are recognized.
- Oconto County Forest – A Barrens management area north of Hwy 64 has old forest characteristics in places.
- Bayfield County Forest – Has designated the Washburn Kettles area as an HCVF.
- Washburn County Forest – Has recognized old oak savannas as the Chicog Savannas and an ancient white pine stand north of the Totogatic River is maintained as an old forest.
- Peshtigo River State Forest has a designated old xeric forest area at Johnson Falls.
- Gov. Knowles State Forest has recognized xeric forest at Brandt Brook and Clam Dam.
- St. Croix River NSR has recognized old xeric forest at Big Island.
- Chequamegon NF – Has recognized old xeric forest at Rock Lake, and the Moquah area.
- Black River State forest – Has recognized old xeric forest in the Upper Black River, East Fork Forest and Arbutus Oaks SNAs.
- Eau Claire County Forest – Has recognizes old xeric forest along the North fork of the Eau Claire River.
- Clark County has old xeric forest at Bruce mound, but it has not been recognized as a natural feature.
- Necedah NWR has many acres recognized as old xeric forest.