

Midsized Prairie and Savanna Projects: The next series of sites have known quality prairie or savanna remnants, but they are smaller than the primary sites. Many small prairie and savanna remnants harbor many diverse species, especially invertebrates and rare plants.

Summit Bluff, Monroe County: Very rich dry prairie remnants mixed with many savanna species. The site is near Ft. McCoy and could complement protection there.



Chimney Rock Oak Opening, Trempealeau County: Located on the north side of Hawkinson Valley is Chimney Rock Oak Savanna. This site features an exceptional oak opening with large diameter red oak, white oak, and bur oak dominating the canopy. Although the savanna needs thinning and prescribed burning to rejuvenate the ground layer, structurally the site is fairly intact.



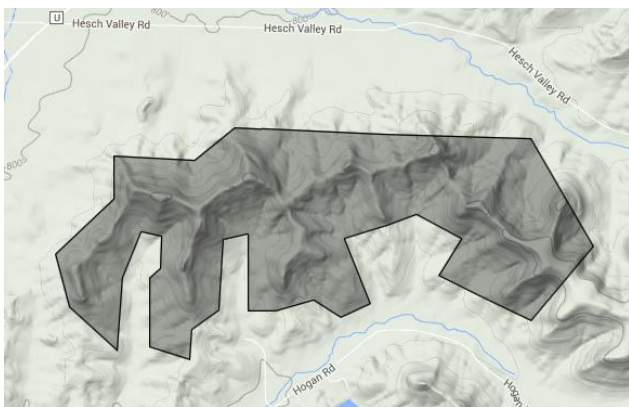
Vosse Coulee, Trempealeau County: Vosse Coulee is a botanically rich site located along the eastern edge of the sandstone influenced Driftless Area. The area harbors a diverse wet prairie, a small high quality dry-prairie, an oak opening restoration site. A massive sand mining operation abuts the site to the east and may cause changes in the habitat.



DuCharme Ridge, Crawford County: The site is on private land and the landowners have spent countless hours and resources to restore the site to its native glory. Adjacent landowners have similar habitat, if they could only be encouraged to conduct complementary management on their land.



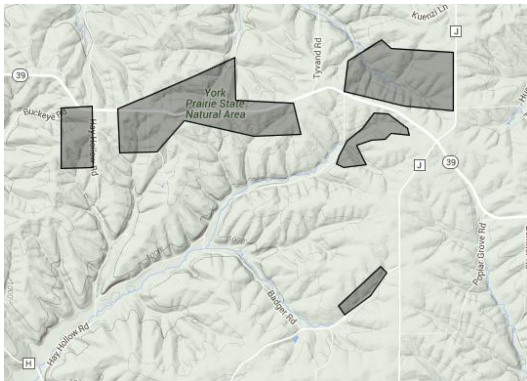
Waters Valley Prairies, Buffalo County: Very rich dry prairie remnants mixed with many savanna species. The site has the largest open prairie remnants in all of central Buffalo County.



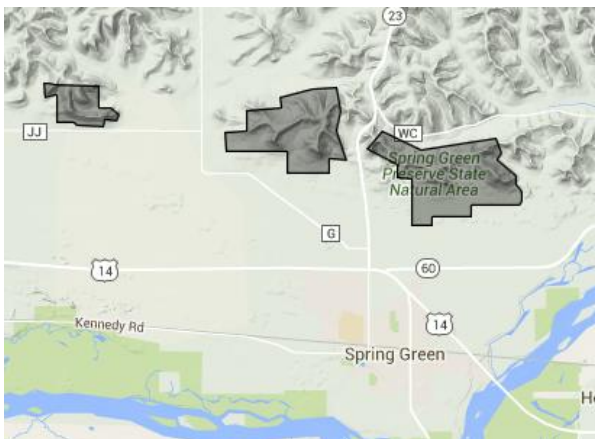
Montana Ridge Prairies, Buffalo County: Very rich dry prairie remnants mixed with many savanna species. The site has the most floristically diverse prairie remnants in all of central Buffalo County. A recently built house on the crest of the hill may great restrict restoration efforts.



York Prairies, Green County: Very rich dry prairie remnants mixed with many savanna species. The site has floristically diverse prairie remnants in northwest Green County.



Spring Green Preserve, Sauk County: Spring Green Preserve holds the finest sand prairie in the entire state. Most of the quality prairie has been protected, but several parcels are still private.



Boscobel Bluffs and Prairies, Grant County: Boscobel Bluffs features a complex of dry prairies and oak savannas situated on sand terraces above the floodplain of the lower Wisconsin River. The high quality prairies on the steep bluff faces are rich in species diversity and vary from dry open prairie to areas overgrown with shrubs due to fire suppression.

