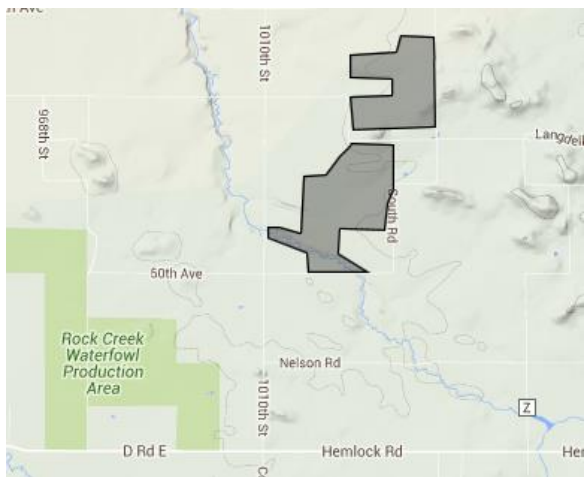


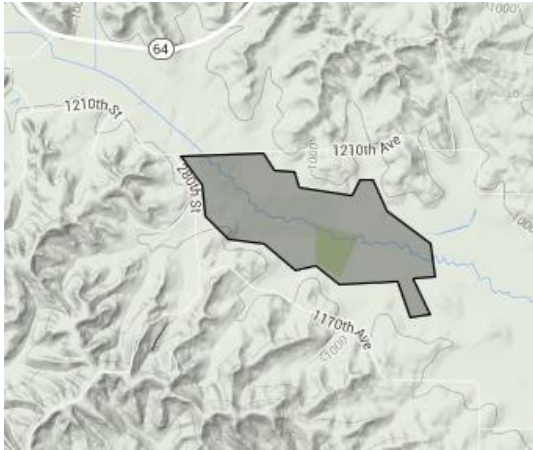
Kelly Creek Meadow, Eau Claire County: Roadside observations strongly suggest this area has a quality wet prairie system. This natural community is quite rare in the state. Furthermore, large diameter open-grown bur oaks dominate the slightly higher ground indicating an oak opening restoration opportunity.



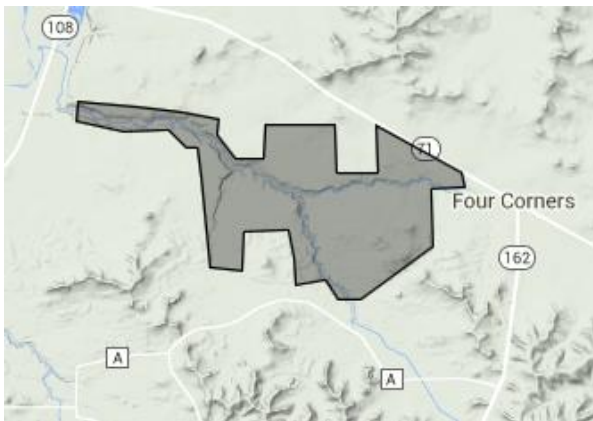
Candy Corners, Eau Claire County: Roadside observations strongly suggest this area has a quality wet prairie system. This natural community is quite rare in the state. Furthermore, large diameter open-grown black oaks dominate higher ground indicating an oak barrens restoration opportunity.



Big Beaver Meadow, Dunn County: This area has a quality wet prairie system. This natural community is quite rare in the state. Furthermore, large diameter open-grown bur oaks dominate the slightly higher ground indicating an oak opening restoration opportunity. Part of the area was formerly owned by the DNR.



Sand Creek Barrens, Monroe & LaCrosse Counties: Patches of high quality sand barrens are found in this area.



Very small Parcels that are Quite Important for Developing a Generational Sense of Place:

Some of the places are listed as general ideas and other, especially geological formations are given TRS locations.

- Caves provide unique habitat and all should be protected.
- Prairie potholes in the Dunn, Eau Claire, and a large one on the Buffalo Trempealeau county line are important for waterfowl and migratory shorebirds.
- Rockshelters were used our first peoples as important sites for shelter and ceremony. All too often “modern” people feel the need to obliterate this incredible past. Any protect may also require secrecy.
- Chimney Rock, Trempealeau County – 23N, 9W, Sec 2 – This feature needs to be seen. Clearing or thinning the nearby vegetation is needed.
- Windrow Rocks on Debello Ridge, Monroe County – 13N, 1E, Sec22. This feature needs to be seen. Clearing or thinning the nearby vegetation is needed.

- Jimtown Natural Bridge, Richland County – 10N, 2W, Sec 18 – This feature needs more recognition.
- Dripping Rocks, Grant County – 3N, 4W, Sec 17 – These dripping cliffs above the Grant River need protection, management and recognition.
- Tufa Falls, Grant County – 2N, 1W, Sec 5 – This site was formerly a party spot for UW-Platteville students. Recent development has limited that activity, but recognition of the sites natural features and management are needed.
- Viola Palisades, Richland County – 12N, 2W, Sec 7 – These massive cliffs could be more impressive with clearing to show their full extent.
- Avalanche Cliffs, Vernon County – 13N, 3W, Sec 29 & 32 – These massive cliffs could be more impressive with clearing to show their full extent.
- Tower Rock, Sauk County – 10N, 5E, Sec 28 & 32 – This massive cliff could be more impressive with clearing to show their full extent.
- Mother Lot Point, Crawford County – 10N, 4W, Sec 11 – This massive cliff could be more impressive with clearing to allow the prairie remnant to expand.
- Rock Creek Gorge, Dunn County – 26N, 11W, Sec 15 & 22 – This has many rare species. The land surrounding the gorge is mostly subdivided into small lots. A Neighborhood association may be the best way to recognize the sites and values and apply appropriate management.
- Bear Creek Gorge (Dorwin's Mill Site), Pepin County – 25N, 13W, Sec 23 – The present towners are doing an exemplary job of maintain the gorge features (moist cliffs, seeps, conifer relicts, as well as the historic mill values. Long-term conservation is needed.
- Kinnikinnic Gorge, Pierce County – Downstream from River Falls to Kinnikinnic State Park. This feature has a land trust dedicated to its preservation with much work still remaining.
- Trimble Peak and Chapultepec Buttes, Trempealeau County – South of Blair are many steep-sided and pointed buttes in the landscape. With a focus on sand mining, monetarily and legislatively, the sense of place features may be in jeopardy. Active consideration for these features should occur.
- River Falls Monument, St. Croix County – 28N, 18W, Sec 9 – This feature needs to be seen. Clearing or thinning the nearby vegetation is needed.
- The Pinnacle, Dunn County – 27N, 13W, Sec 16 – This feature needs to be seen. Clearing or thinning the nearby vegetation is needed.
- Three Chimneys, Vernon County – 13N, 5W, Sec 13 – This well-known feature is protected and recognized by the owners. Many events happen near the chimneys. Long-term consideration is needed.
- The Pinnacles, Iowa County – 7N, 5E, Sec 15 – This feature needs to be seen. Clearing or thinning the nearby vegetation is needed.